

SE1 RENTALS FOR PROFESSIONALS

Publication Evening Standard
Date 23 August 2017

Smart moves

SE1 rentals for professionals

By **David Spittles**

HUNDREDS of new rental homes have been unveiled at Elephant and Castle, the rapidly regenerating Zone 1 address. Available from next month, 374 stylish and fully furnished flats will be priced for a professional salary from £410 per week – so they're not cheap, but they are definitely convenient and come with flexible contract terms plus "lifestyle extras".

Operated by **Get Living London**, which established the capital's first purpose-built neighbourhood for renters at Stratford on the site of the former Olympic Athletes' Village, the

development is at the heart of the bustling south-of-the-river regeneration area, next to two Tube stations and on the cycle superhighway.

A new public square with a weekly market has been created along with five new restaurants, a gym and an Artworks hub with gallery, yoga studio, barber and cafés.

Get Living London's fresh approach to renting means tenants are not required to pay the customary six-week security deposit. No additional fees are charged and tenancies can be for up to three years, with a resident-only break clause. Renters

can also choose from one of three interior design packages. High-speed broadband is free plus there is a club room and garden terrace, and delivery lockers for internet orders. Call 020 3714 8080.

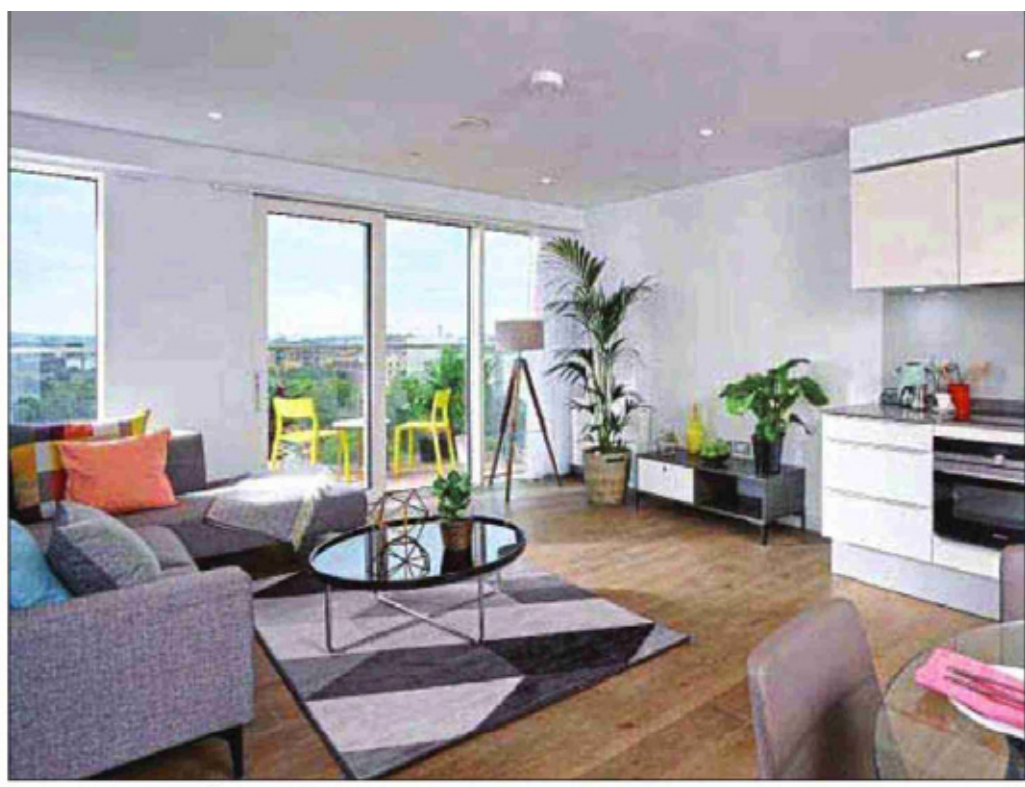
A similar project has been launched at **Wembley Park**, which is set to become the UK's largest rental quarter with 5,000 homes wrapping around the famous stadium, only 12 minutes on the Tube from central London. Rents start at a pricey £1,750 per month for a studio but new

residents get a bunch of freebies when they move in, including two tickets for a Wembley Arena event and a meal at the local London Designer Outlet. Unfurnished flats are available and there are storage facilities in the building for stop-gap renters who want to park their possessions. Call 020 3151 1927.



SE1 RENTALS FOR PROFESSIONALS

Publication Evening Standard
Date 23 August 2017



From £410 per week: apartments at Get Living London's new scheme in Elephant and Castle, above and above right, available from next month